

# TGB4045

Walk-behind Scrubber Dryer



**Numatic**

**Optimise cordless convenience with 40L capacity and 450mm scrub width, user-friendly controls and on-board charging system help make for true versatile cleaning convenience.**

Tough professional construction that offers powerful cordless cleaning results with long-life GelTec batteries and user-friendly controls that includes clear battery meter indicator.

Features include a Structofoam tilting brush deck, polyform tanks, fully sealed gel batteries, built in battery charger, heavy duty TwinFlo wet pick-up vacuum system and heavy duty geared brush drive; all for powerful cleaning results.

### Powerful Cleaning Results

Powerful wet pick-up with heavy-duty Polyform tanks and TwinFlo vacuum motor.

### Clean, Dry & Safe Floor in Minutes

Consistent, quick and high-quality cleaning results, wherever they're needed.

### Cordless Freedom, Flexibility & Safety

Total freedom, flexibility and safety of cable-free operation.

### User Friendly Features

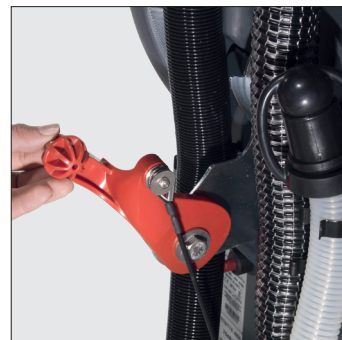
Incorporating user-friendly, colour-coded controls.

### Support at your Fingertips, Straight from your Mobile

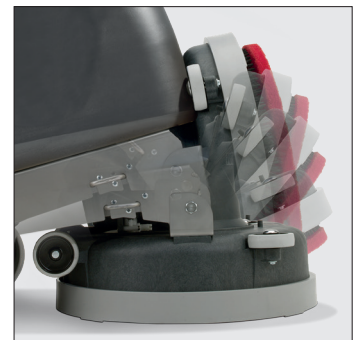
Access a wide range of help and support through the Nu-Assist App.

### Productivity Area Coverage

1,215m<sup>2</sup> per hour.



Floor Tool Lifting Handle



Tilting Brush Deck



Fully Adjustable Handle

## Specifications

Model	Brush Motor	Vac Motor	Power 24V / Ah	Brush Speed	Pad / Brush Width	Capacity	NET Weight	Dimensions (WxLxH)	Runtime	Recharge Time
TGB4045	300W	400W	2x12V / 100	100rpm	400 / 450mm	40L	128.0Kg	470x1070x1160mm	2.25hrs	8hrs

☎ 01293 852022

✉ [info@wbfloormachines.co.uk](mailto:info@wbfloormachines.co.uk)

🌐 [www.wbfloormachines.co.uk](http://www.wbfloormachines.co.uk)

WB Floor Machines Ltd, Unit 7, Burns Way, Holmbush Potteries Estate, Faygate, Horsham, West Sussex RH12 4ST.

Company No: 1676543    Vat No: 407495441



**WB FLOOR  
MACHINES**

**SALES · SERVICE · HIRE**