

Numatic  
INTERNATIONAL

# Owner Instructions



CAUTION,  
Read instructions before using the machine



CVC 370  
WV 370  
WVT 370  
WV 380  
WV 470



*CVC Machine - Kit A21A*



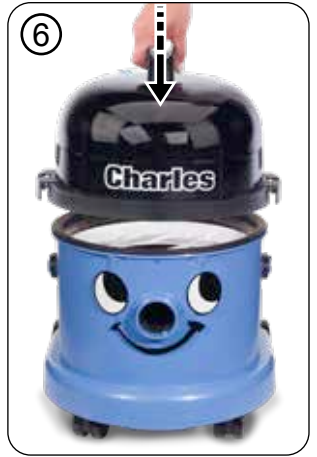
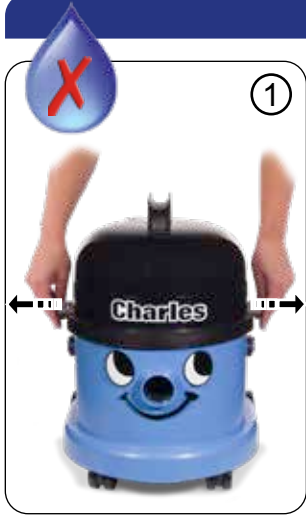
*WV Machine - Kit AA12*





# Wet - Using the machine





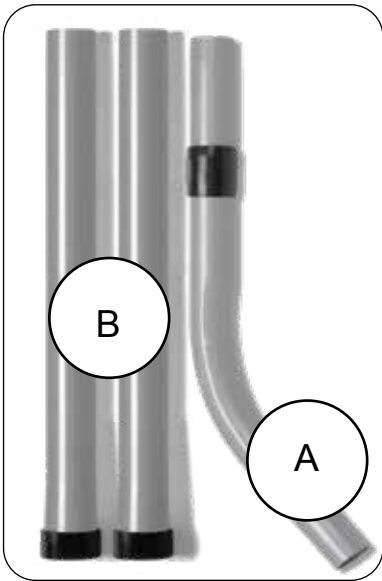


50mm

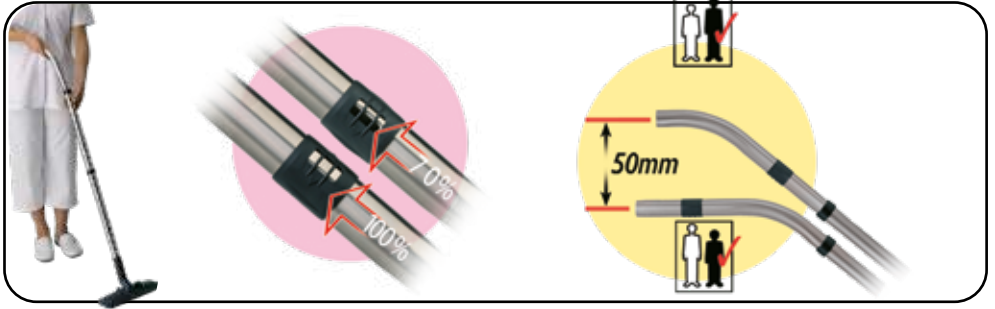
A

B

B



# Dry - Using your machine



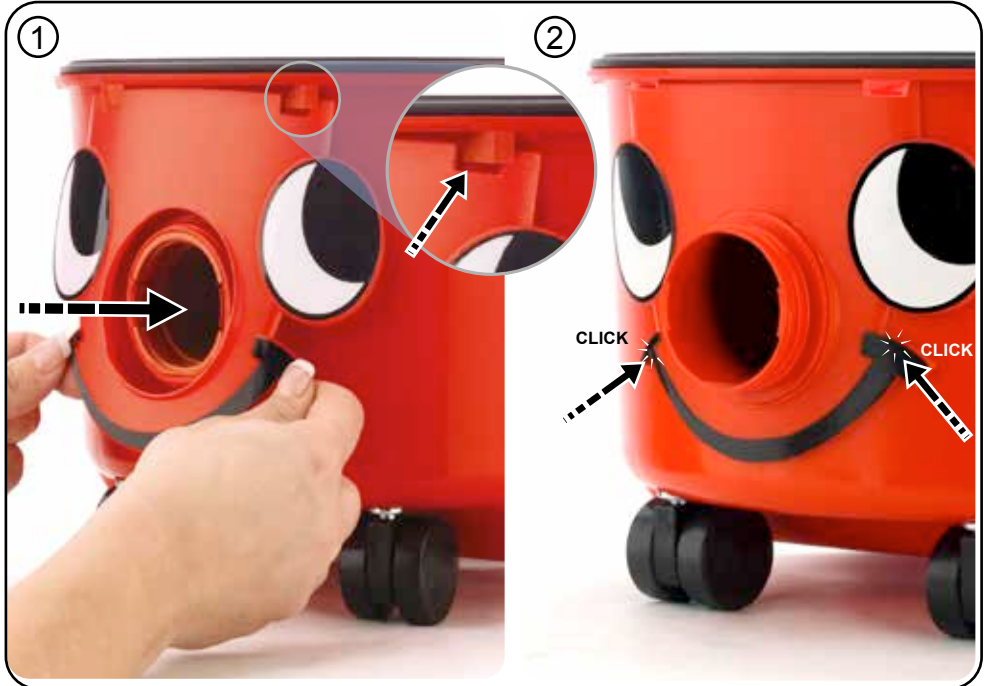
*370 drum - Wand Docking*



*470 Handle Locking Instructions*



*Fitting the face*

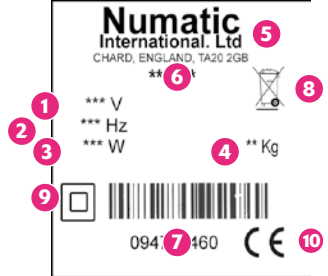


*Removing the face*



- 1 Voltage
- 2 Frequency
- 3 Rated Input Power
- 4 Weight (ready to work)
- 5 Company Name & Address
- 6 Model
- 7 Machine yr/wk Serial number
- 8 WEEE Logo
- 9 Protection Class 2 Symbol
- 10 CE Mark

## Rating Label



**PPE (personal protective equipment)** That may be required for certain operations.

|                |                     |                             |               |                    |
|----------------|---------------------|-----------------------------|---------------|--------------------|
|                |                     |                             |               |                    |
| Ear Protection | Safety Footwear     | Head Protection             | Safety Gloves |                    |
|                |                     |                             |               |                    |
| Eye Protection | Protective Clothing | Dust / Allergens Protection | hi Vis Jacket | Caution Floor Sign |

**NOTE:** A risk assessment should be conducted to determine which PPE should be worn.

## Safety Critical Components

Mains leads:

HO5VV-F 10 x 2 x 1.00 mm<sup>2</sup>

## WEEE Legislation

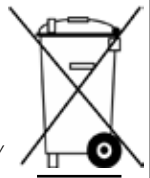
(Waste, Electrical and Electronic Equipment)

Vacuum cleaner, accessories and packaging should be sorted for environmentally - friendly recycling.

### (Only for EU Countries)

Do not dispose of vacuum cleaner into household waste! According to the European Directive 2012/19/EU on waste electrical and electronic equipment and its incorporation into national law.

Vacuum cleaners that are no longer suitable for use must be separately collected and sent for recovery in an environmentally - friendly manner.



Failure to rectify the problem or in the event of a breakdown contact your Numatic dealer or the Numatic Technical helpline +44 (0)1460 269268.

## Daily

Keep the machine clean, including hoses and tubes.

Ensure the bag and filter are fitted.

Regularly examine the power cord.

Check dust bag frequently.

Check filters are clean.

## Weekly - as daily and:-

Check for any worn or damaged parts and replace immediately.

MAINTENANCE

# Information for wet and dry use vacuum cleaners

## Warning

Read the instruction manual before using the machine.

Operators shall be adequately instructed on the use of these machines.

As with all electrical equipment, care and attention must be exercised at all times during use,

in addition to ensuring that routine and preventative maintenance is carried out periodically to ensure safe operation.

Failure to carry out maintenance as necessary, including the replacement of parts to the correct standard could render this equipment unsafe and the manufacturer can accept no responsibility in this respect.

The machine shall be disconnected from the mains by removing the plug from the supply socket during cleaning or maintenance and when replacing parts or converting the machine to another function.

This machine is not to be used by children or persons with reduced physical, sensory or mental capabilities, or lack of experience or knowledge.

Children being supervised are NOT to play with the machine.

This appliance is intended to be assembled, cleaned and maintained by an adult.

This machine is not a toy.

This machine is not suitable for picking up hazardous or explosive dust. Contact your local distributor if you require a machine capable of performing these tasks.

## Caution

If foam/liquid comes out of machine exhaust, switch off immediately.

Allow the accumulated liquid to drain out through the machine exhaust, check the float assembly to ensure correct operation, empty the container if full of liquid, reassemble the machine.

Immediately upon start up there will be a certain amount of liquid issuing from the machine exhaust which will be the residue of liquid still within the power head. This will be quickly discharged after which the machine should function normally.

Liquid ejected from the machine could be hazardous as a result of its temperature, pressure or chemical content.

Ensure that the filtration system fitted to the machine is suitable for the material being collected.

This machine is for indoor use only.

This machine shall be stored indoors only.

When moving from one place to another, consider the weight of the machine.

## Notes

You must ensure that the filtration system fitted to the machine is suitable for the material being collected.

This product complies with the requirements of clause 20 of IEC/EN 60335-2-69 Stability and Mechanical Hazards.

The primary use for this machine is commercial, for example in hotels, schools, hospitals, factories, shops and offices.

If the vacuum cleaner stops working, remove the plug from the wall before investigating where the fault lies.

If the vacuum cleaner has a blockage, switch off, remove the plug from the socket outlet, and inspect the floor tool, wands and hose for debris. If the floor tool, wands and hose are clear, replace the dust bag and clean the filter.

The vacuum cleaner should be inspected after use for damage.

The power light will illuminate, when your machine is connected to a suitable power supply (where fitted).

## Do

- Use a bag and filter at all times when using 'dry'.
- Keep your machine clean.
- Keep filters clean.
- Regularly clean the water level limiting float safety valve and examine for signs of damage or correct operation.
- Keep hoses and tubes clear.
- Replace any worn or damaged parts immediately.
- Regularly examine the power cord, if damage is found, power cord must be replaced by a qualified person using the correct Numatic original part.
- Keep diffuser filter (where fitted) clean.

## Don't

- Use steam cleaners or pressure washers to clean the machine or use the machine in the rain.
- Immerse in water for cleaning.
- Allow any inexperienced repairs. Call the experts.
- Use wet if float valve is not functioning or fitted.
- Use to suck up hot ashes, or lighted cigarette ends.
- Run the machine over the power cable during operation as a hazard may occur.
- Pull on the cable to unplug the machine from the power supply.
- Walk over-wet carpets, upholstery or fabrics.
- Walk on clean carpets until fully dry.
- Attempt machine maintenance or cleaning unless the power supply plug has been removed from the supply outlet.
- Under any circumstances place foreign objects including (but not limited to) air fresheners, air freshener capsules or scented beads of any type into the top filter of the machine. Doing so can be dangerous and risk damage to the machine and may invalidate the machine warranty.

## Dry Mode maintenance/fault finding

If the vacuum cleaner stops working switch off and remove the plug from the wall before investigating where the fault lies. If the vacuum cleaner will not pick up any debris from the surface, switch off and remove the plug from the wall, inspect the floor tool, wands and hose for blockages, if no blockages are found, the dust bag may be full if the dust bag is not full the filter may be blocked.

## Wet mode

If the vacuum cleaner stops working switch off and remove the plug from the wall before investigating where the fault lies. If the vacuum cleaner has a blockage and will not pick up liquid, switch off and remove the plug from the wall, has the float valve operated, this will shut off the suction and the pitch of the vacuum motor will change. Remove the power head and empty the liquid out of the container, if the container is empty, check that the floor tool wands and hose are not blocked. Flush the system with clean water after use. After use always inspect the machine for damage.

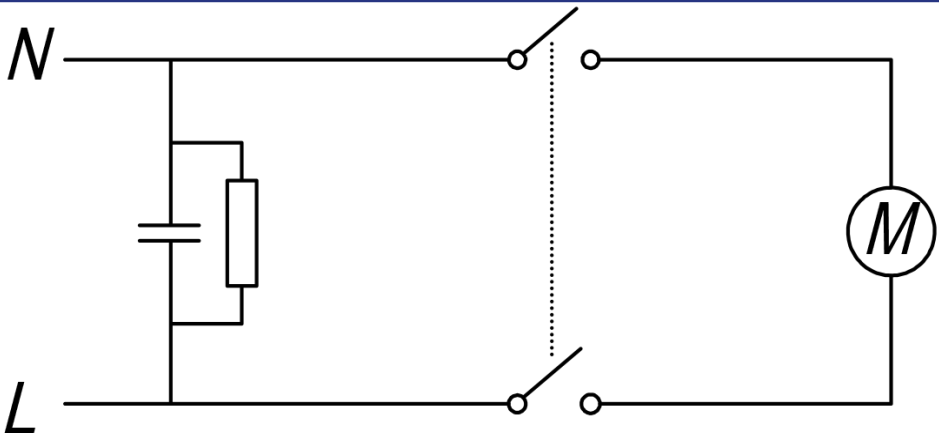
# Replacement Parts

| TriTex Filter     |                                |
|-------------------|--------------------------------|
| 604165            | TriTex Filter                  |
| HepaFlo Dust Bags |                                |
| 604016            | 370 / 380 (NVM 2BH) Pack of 10 |
| 604018            | 470 (NVM 3AH) Pck of 10        |

# Data

| Motor          | AirFlo       | Suction       | Cleaning Range  |   | Class  |
|----------------|--------------|---------------|-----------------|---|--------|
| 1060W          | 49 L/sec     | 2400mm        | 26.8m           |   | II     |
| Capacity Dry   | Capacity Wet | Solution Tank | Size (mm)       | Sound Pressure (LpA)<br>Uncertainty (KpA) | Weight |
| 370: 15 Litres | 9 Litres     | 6 Litres      | 360 x 370 x 510 | 73-77 dB<br>0.2 dB (A)                    | 9 Kg   |
| 380: 15 Litres | 9 Litres     | 6 Litres      | 360 x 370 x 510 |   | 9 Kg   |
| 470: 27 Litres | 20 Litres    | 15 Litres     | 360 x 370 x 710 |   | 9.6 Kg |

# Wiring Diagram







## EU DECLARATION OF CONFORMITY

We hereby declare under our sole responsibility that the following equipment fulfils all the relevant provisions of the following EU Directives

---

Machinery Directive 2006/42/EC  
EMC Directive 2014/30/EU  
RoHS Directive 2011/65/EU

---

Machine Description: Vacuum Cleaner  
Machine Type: CVC, WV, WX, WVT, WVP, CDC, HWD Series.

---

Relevant standards upon which conformity is declared include:

EN 60335-1: 2012 + AC:2014 + A11:2014  
EN 60335-2-69: 2012  
EN 55014-1: 2006 + A1:2009 + A2:2011  
EN 55014-2: 1997 +A1:2001 + A2:2008  
EN 62233: 2008

---

A technical construction file for this equipment is retained at the manufacturer's address under the authorisation of the following signatory:

Name: Allyn Boyes Position: Development Manager

Signed

Date

2/11/17



Numatic International Ltd  
Chard Somerset  
TA20 2GB  
[www.numatic.co.uk](http://www.numatic.co.uk)

GB

# Numatic International Warranty

Numatic International Limited warrant to the original purchaser that its products are free of defects in both material or workmanship for the period shown below:-

|  |                     |
|--|---------------------|
| Homecare and Cleancare Vacuum cleaners.....          | 2 Years             |
| Rotary Floor Machines.....                           | 2 Years             |
| Twintec Auto Scrubber Dryer.....                     | 1 Year              |
| Vario Ride-On Scrubber Dryer.....                    | 1 Year / 1500 hours |
| Mopping, Compacts, Combi and Servocare Products..... | 1 Year              |
| Individual Accessories and Spare Parts.....          | 6 Months            |

*Note: This warranty expressly excludes consumable parts such as carbon brushes, floor brushes, mops, batteries etc, that are considered replaceable from time to time during the normal working life of the machine.*

*Using non Numatic dustbags can be detrimental to both machine performance and life and may invalidate the Warranty.*

- A. The warranty period commences from the date the goods are purchased.*
- B. All warranty claims must be processed through the Dealer from whom the equipment was purchased. The Dealer will co-operate with the purchaser throughout the warranty claims procedure and will arrange any necessary repairs using genuine Numatic parts.*
- C. If the original Dealer is no longer able to fulfil his obligations please contact Numatic International Limited with full details of the claim and proof of purchase so that this may be processed without delay.*
- D. Any warranty claim can only relate to the specific part that is proven to be at fault and for which a replacement will be supplied but cannot be extended to constitute a claim against the complete machine.*
- E. Numatic International will supply the Dealer with any warranty parts required, subject to the claim being validated, after return of the faulty items in accordance with Numatic International Limited's General Conditions of Sale.*
- F. Claims will not be accepted if they are the result of fair wear and tear, misuse or abuse of any kind.*
- G. No replacement will be given unless the appropriate evidence of the validity of the claim has been provided to the satisfaction of Numatic International Limited.*
- H. Numatic International Limited reserve the right to charge for any unnecessary work carried out as a result of an invalid claim.*
- I. No variation to this warranty may be made or implied by any member of Numatic International Limited or its Dealers unless such variation is in writing and authorised by the Company*



Numatic International Limited, Chard, Somerset, TA20 2GB

Telephone: 01460 68600 Fax: 01460 68458

© Numatic International Limited



**Numatic**  
INTERNATIONAL



**WB FLOOR  
MACHINES**

**SALES · SERVICE · HIRE**

☎ 01293 852022

✉ [info@wbfloormachines.co.uk](mailto:info@wbfloormachines.co.uk)

🌐 [www.wbfloormachines.co.uk](http://www.wbfloormachines.co.uk)

🏠 Unit 7 Burns Way, Holmbush Potteries  
Estate, Horsham RH12 4ST