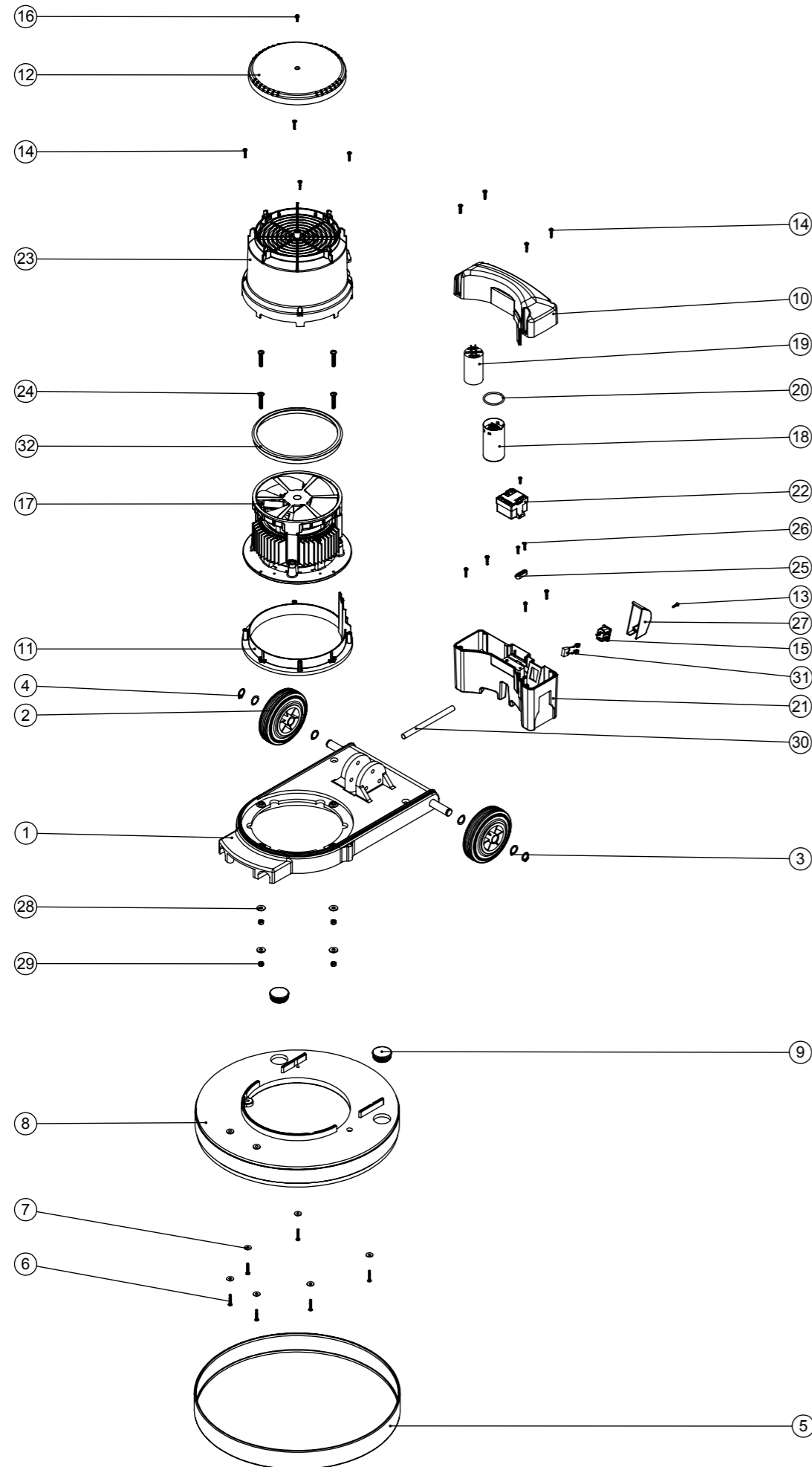


Numatic International Spare Parts

Model No: HFM 1015/1023 EXPLODED DRAWING ASSEMBLY

234893
DRAWING: DRW-12014 ISS:A01
27/09/2012

NB: FOR WIRING SEE DRAWING: DRW-11701



Numatic International Spare Parts

Model No: HFM 1015/1023 EXPLODED DRAWING ASSEMBLY

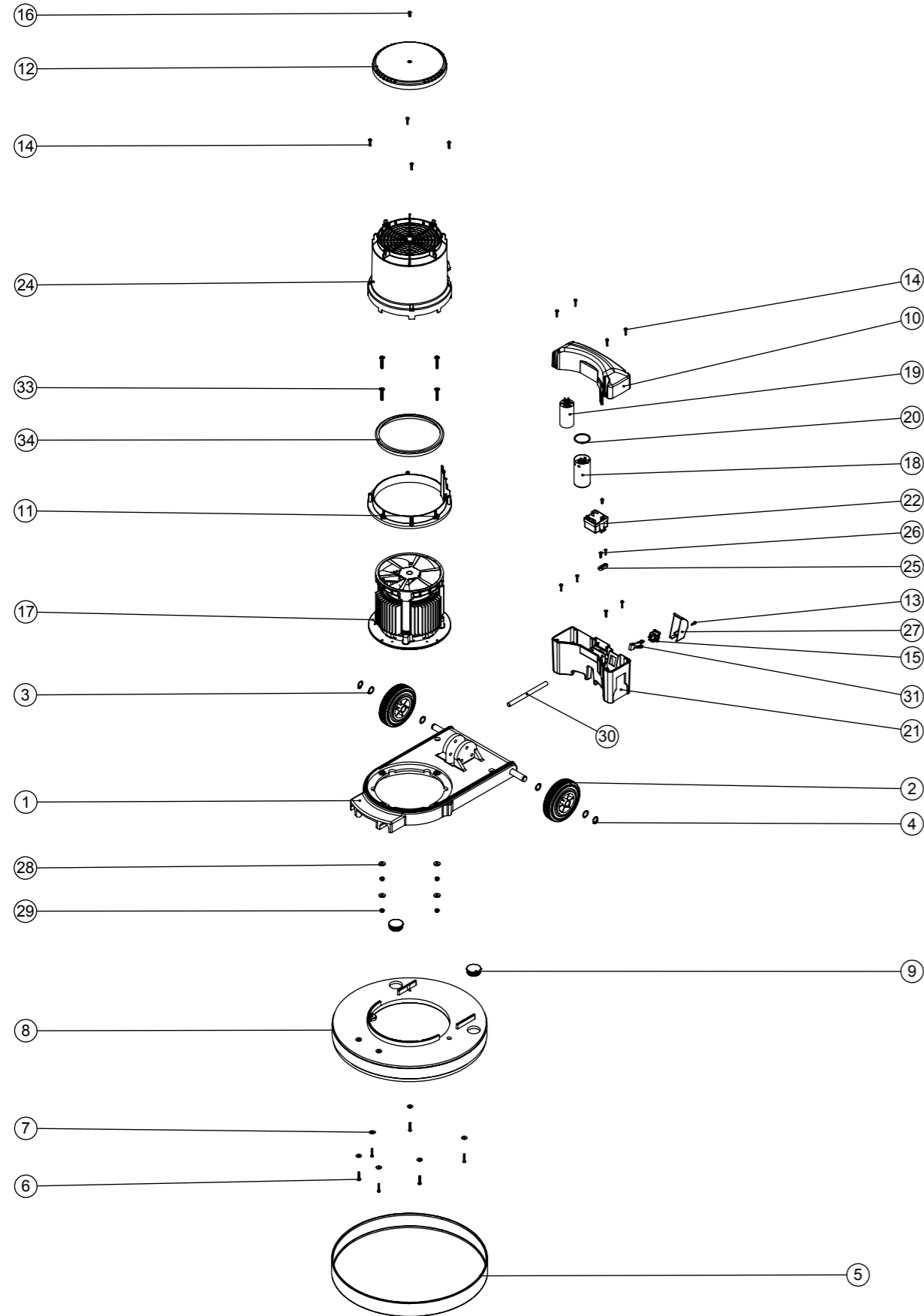
ITEM NO.	PART NO.	DESCRIPTION	QTY.
1	304260	MULTIDECK BASE MOULDING SUB ASSY	1
2	229060	WHEEL GREY BLACK HUB	2
3	219219	21.5MM X 16.3MM WAVE WASHER	4
4	229051	EXTERNAL CIRCLIP	2
5	206466	LIGHT GREY MEDIUM BUFFER RING (RAL 7042)	1
6	219369	No8 X 1 INCH LONG POZI PAN STAINLESS STEEL PLASTITE SCREW	6
7	219644	M5 FORM G STAINLESS STEEL WASHER	6
8	330010	DECK FOR DUSTROL Y SYSTEM	1
9	229400	BLACK END STOP	2
10	237505	HFM CAPACITOR BOX TOP MOULDING	1
11	237500	BOTTOM SECTION MOULDING	1
12	237503	LID MOULDING (HFM)	1
13	219318	No6 X 1/2 INCH LONG POZI PAN PLASTITE SCREW	2
14	219568	No8 X 3/4 INCH LONG POZI PAN STAINLESS STEEL SCREW	12
15	220584	RENDAR CLIP IN PLUG	1
16	219471	M4 X 12MM LONG POZI PAN SEMS SCREW	1
17	205201	INDUCTION MOTOR 2-POLE 1500W 220-240V 50Hz	1
18	205088	MOTOR START CAPACITOR 150MFD 280V C/W RESISTOR AND M8 STUD	1
19	208651	MOTOR RUN CAPACITOR 22uF C/W M8 STUD	1
20	208535	O RING 39.5MM ID x 3 DIA	1
21	330081	HFM CAPACITOR BOX BOTTOM MOULDING C/W INSERT	1
22	208582	230V SINGLE SPEED VOLTAGE RELAY (1000W)	1
23	330080	HFM MID SECTION MOULDING PRINTED (1000W)	1
24	219643	M6 X 35MM LONG STAINLESS STEEL POZI PAN SCREW	4
25	227008	BLACK CABLE CLAMP	1
26	219107	No6 X 5/8 INCH LONG POZI PAN PLASTITE SCREW	2
27	229213	PLUG COVER	1
28	219647	M6 FORM G STAINLESS STEEL WASHER	4
29	219642	M6 STAINLESS STEEL NYLON INSERT NUT	4
30	330086	MOTOR WIRE SLEEVE	1
31	230136	SUPPRESSOR ASSEMBLY	1
32	237412	HFM TOP MOTOR GASKET	1

Numatic International Spare Parts

Model No: HFM 1515/1523/1530/1545 EXPLODED DRAWING ASSEMBLY

234894
DRAWING: DRW-12020 ISS:A01
27/09/2012

NB: FOR WIRING SEE DRAWING: DRW-11701



Numatic International Spare Parts

Model No: HFM 1515/1523/1530/1545 EXPLODED DRAWING ASSEMBLY

ITEM NO.	Item_No	DESCRIPTION	QTY.
1	304260	MULTIDECK BASE MOULDING SUB ASSY	1
2	229060	WHEEL GREY BLACK HUB	2
3	219219	21.5MM X 16.3MM WAVE WASHER	4
4	229051	EXTERNAL CIRCLIP	2
5	206466	LIGHT GREY MEDIUM BUFFER RING (RAL 7042)	1
6	219369	No8 X 1 INCH LONG POZI PAN STAINLESS STEEL PLASTITE SCREW	6
7	219644	M5 FORM G STAINLESS STEEL WASHER	6
8	330010	DECK FOR DUSTROL Y SYSTEM	1
9	229400	BLACK END STOP	2
10	237505	HFM CAPACITOR BOX TOP MOULDING	1
11	237500	BOTTOM SECTION MOULDING	1
12	237503	LID MOULDING (HFM)	1
13	219318	No6 X 1/2 INCH LONG POZI PAN PLASTITE SCREW	2
14	219568	No8 X 3/4 INCH LONG POZI PAN STAINLESS STEEL SCREW	12
15	220584	RENDAR CLIP IN PLUG	1
16	219471	M4 X 12MM LONG POZI PAN SEMS SCREW	1
17	205202	INDUCTION MOTOR 4-POLE 1500W 220-240V 50Hz	1
18	205088	MOTOR START CAPACITOR 150MFD 280V C/W RESISTOR AND M8 STUD	1
	205204	INDUCTION MOTOR 2-POLE 1500W 220-240V 50Hz (HFM 1545 ONLY)	1
19	220897	MOTOR RUN CAPACITOR 25 MFD 450V	1
20	208535	O RING 39.5MM ID x 3 DIA	1
21	330081	HFM CAPACITOR BOX BOTTOM MOULDING C/W INSERT	1
22	206823	230V SINGLE SPEED VOLTAGE RELAY	1
33	219643	M6 X 35MM LONG STAINLESS STEEL POZI PAN SCREW	4
24	330082	HFM MID SECTION MOULDING PRINTED (1500W)	1
25	227008	BLACK CABLE CLAMP	1
26	219107	No6 X 5/8 INCH LONG POZI PAN PLASTITE SCREW	2
27	229213	PLUG COVER	1
28	219647	M6 FORM G STAINLESS STEEL WASHER	4
29	219642	M6 STAINLESS STEEL NYLON INSERT NUT	4
30	330086	MOTOR WIRE SLEEVE	1
31	230136	SUPPRESSOR ASSEMBLY	1
34	237412	HFM TOP MOTOR GASKET	1

Numatic International Spare Parts

Model No: HFT 1530 EXPLODED DRAWING ASSEMBLY

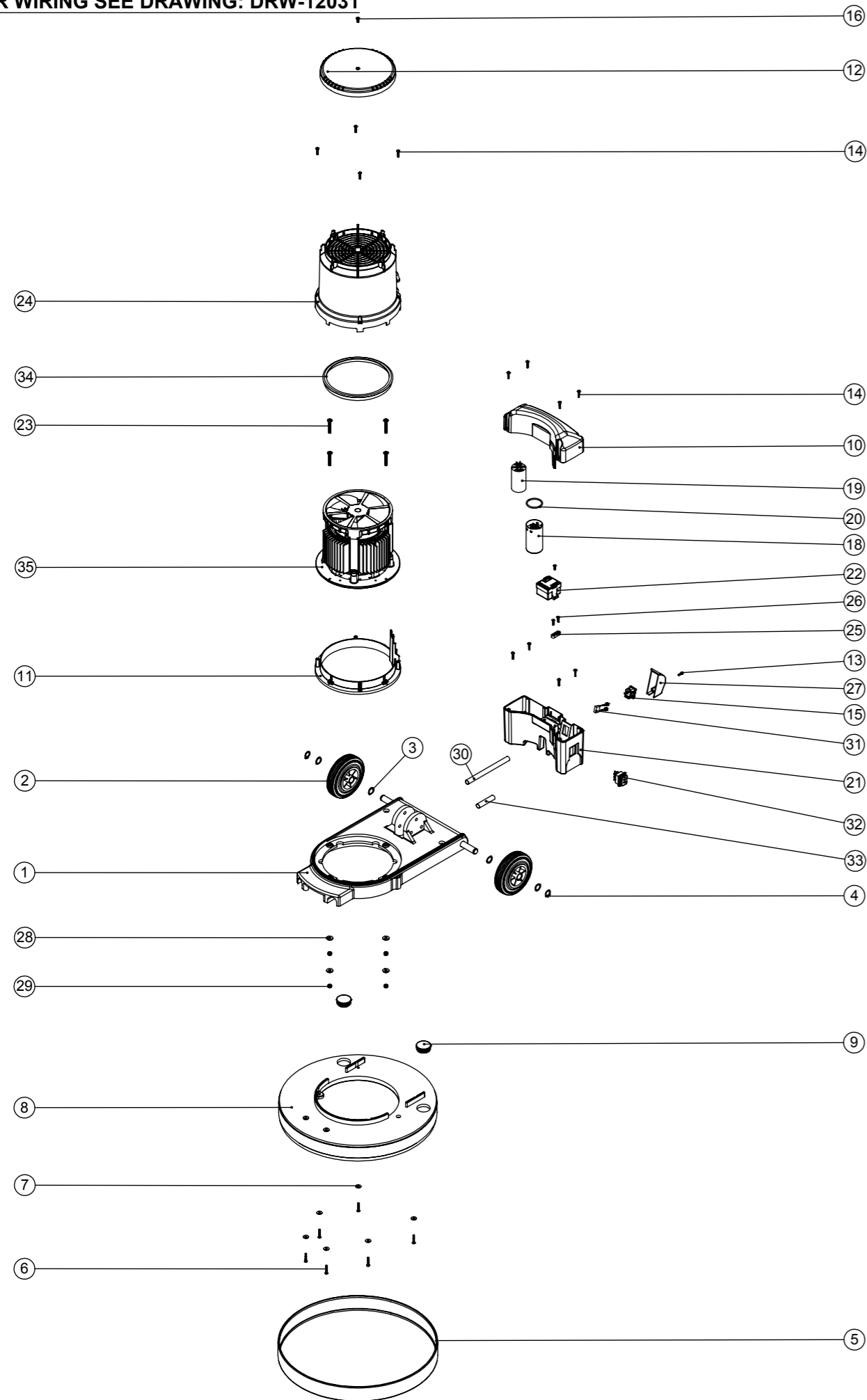
NB: FOR WIRING SEE DRAWING: DRW-12031

234895

DRAWING: DRW-12387 ISS:A01

06/11/201

2



Numatic International Spare Parts

Model No: HFT 1530 EXPLODED DRAWING ASSEMBLY

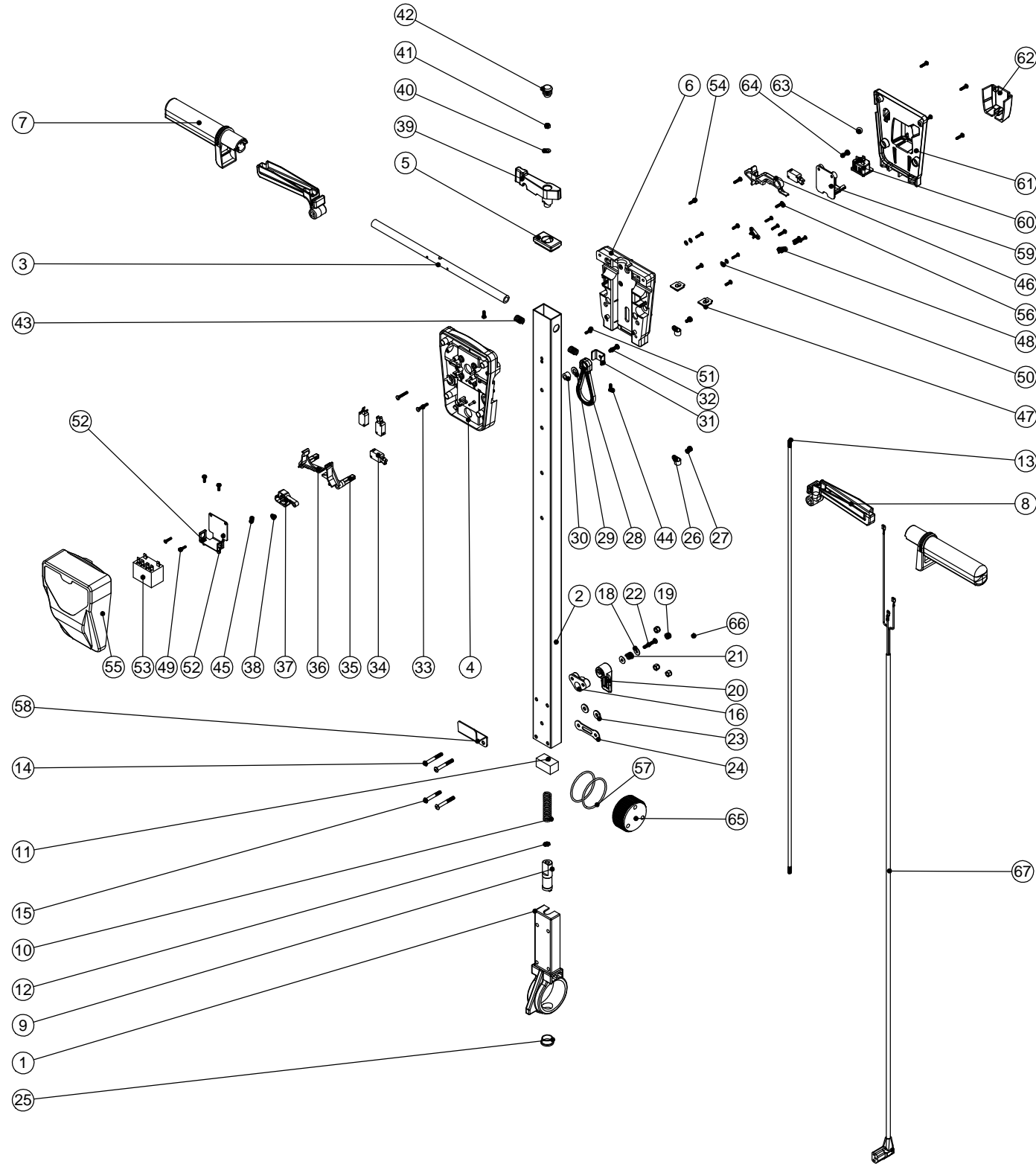
ITEM NO.	Part No.	DESCRIPTION	QTY.
1	304260	MULTIDECK BASE MOULDING SUB ASSY	1
2	229060	WHEEL GREY BLACK HUB	2
3	219219	21.5MM X 16.3MM WAVE WASHER	4
4	229051	EXTERNAL CIRCLIP	2
5	206466	LIGHT GREY MEDIUM BUFFER RING (RAL 7042)	1
6	219369	No8 X 1 INCH LONG POZI PAN STAINLESS STEEL PLASTITE SCREW	6
7	219644	M5 FORM G STAINLESS STEEL WASHER	6
8	330010	DECK FOR DUSTROL Y SYSTEM	1
9	229400	BLACK END STOP	2
10	237505	HFM CAPACITOR BOX TOP MOULDING	1
11	237500	BOTTOM SECTION MOULDING	1
12	237503	LID MOULDING (HFM)	1
13	219318	No6 X 1/2 INCH LONG POZI PAN PLASTITE SCREW	2
14	219568	No8 X 3/4 INCH LONG POZI PAN STAINLESS STEEL SCREW	12
15	220584	RENDAR CLIP IN PLUG	1
16	219471	M4 X 12MM LONG POZI PAN SEMS SCREW	1
35	205205	INDUCTION MOTOR 2/4-POLE 1250/1000W 220-240V 50Hz	1
18	205088	MOTOR START CAPACITOR 150MFD 280V C/W RESISTOR AND M8 STUD	1
19	220897	MOTOR RUN CAPACITOR 25 MFD 450V	1
20	208535	O RING 39.5MM ID x 3 DIA	1
21	330083	HFM CAPACITOR BOX BOTTOM MOULDING 2 SPEED	1
22	206824	230V 2 SPEED VOLTAGE RELAY	1
23	219982	M6 X 40MM LONG POZI PAN STAINLESS STEEL SCREW	4
24	330082	HFM MID SECTION MOULDING PRINTED (1500W)	1
25	227008	BLACK CABLE CLAMP	1
26	219107	No6 X 5/8 INCH LONG POZI PAN PLASTITE SCREW	2
27	229213	PLUG COVER	1
28	219647	M6 FORM G STAINLESS STEEL WASHER	4
29	219642	M6 STAINLESS STEEL NYLON INSERT NUT	4
30	330086	MOTOR WIRE SLEEVE	1
31	230136	SUPPRESSOR ASSEMBLY	1
32	229465	DOUBLE POLE CHANGE OVER RED ROCKER SWITCH	1
33	330094	MOTOR SLEEVE (SHORT)	1
34	237412	HFM TOP MOTOR GASKET	1

Numatic International Spare Parts

Model No: HFM HANDLE EXPLODED DRAWING

234899
DRAWING: DRW-12376 ISS:A01
25/09/2012

NB: FOR WIRING SEE DRAWING: DRW-11789



Numatic International Spare Parts

Model No: HFM HANDLE EXPLODED DRAWING

ITEM NO.	PART No	DESCRIPTION	QTY.
1	229081	HANDLE CASTING MACHINED	1
2	429136	HFM HANDLE TUBE PAINTED (1025mm)	1
3	338269	CROSS TUBE	1
4	227576	FRONT INNER HALF MOULDING	1
5	227582	HANDLE PLUG MOULDING	1
6	227577	REAR INNER HALF MOULDING	1
7	227580	HAND GRIP MOULDING	2
8	227581	TRIGGER MOULDING	2
9	229073	GEAR LOCKING PIN	1
10	229138	SPRING	1
11	229030	ANTI VIBRATION PAD	1
12	219099	M6 HALF NUT	1
13	208432	1035MM HANDLE LOCKING ROD	1
14	219881	M6 X 45MM SOCKET BUTTON HEAD SCREW	3
15	219807	M6 X 40MM LONG SOCKET BUTTON HEAD BOLT	1
16	227806	CABLE RELEASE BASE MOULDING	1
17	219076	M5 NYLON INSERT NUT	1
18	219644	M5 FORM G STAINLESS STEEL WASHER	3
19	219088	M6 NYLON INSERT NUT	4
20	227807	CABLE RELEASE TOP MOULDING	1
21	206599	SPRING (REF:C5514370)	1
22	219720	M5 X 30MM LONG STAINLESS STEEL POZI PAN SCREW	1
23	219008	M6 FORM G WASHER	2
24	229139	CABLE CLAMP	1
25	229099	25MM DIA HOLE PLUG	1
26	219393	P CLIP	2
27	219047	M5 X 10MM LONG POZI PAN SEMS SCREW	2
28	226008	STRESS RELIEF	1
29	219010	M8 FORM A WASHER	1
30	226006	SPACER (BLACK)	1
31	329231	STRESS RELIEF BRACKET	1
32	219054	M5 X 20MM LONG POZI PAN SCREW	1
33	219811	NO8 X 1 INCH LONG POZI-PAN SELF TAP SCREW	2
34	229483	SNAP ACTION SWITCH	4
35	227585	LEFT HAND SWITCH OPERATING LEVER MOULDING	1
36	227586	RIGHT HAND SWITCH OPERATING LEVER MOULDING	1
37	227587	CENTRE SWITCH OPERATING LEVER MOULDING	1
38	219805	4MM SPIREFIX	1
39	227583	ADJUSTMENT LEVER MOULDING	1
40	219493	M6 NYLON WASHER	1
41	219642	M6 STAINLESS STEEL NYLON INSERT NUT	1
42	20638V	19MM BLACK TUBE END STOP	1
43	219803	TRIGGER COMPRESSION SPRING	2
44	219270	No8 X 1/2 INCH LONG POZI PAN SELF TAP SCREW	2
45	219804	SWITCH COMPRESSION SPRING	1
46	227584	INTERLOCK LEVER MOULDING	1
47	329539	MODIFIED BLANKING PLATE	2
48	229669	LOLINE HANDLE CABLE CLAMP	2
49	219107	No6 X 5/8 INCH LONG POZI PAN PLASTITE SCREW	8
50	219206	M4 FORM A WASHER	4
51	219471	M4 X 12MM LONG POZI PAN SEMS SCREW	3
52	303526	NUTSERTED RELAY MOUNTING BRACKET	1
53	206575	240V / 25A RELAY	1
54	219101	No8 X 1/2 INCH LONG POZI PAN PLASTITE SCREW	4
55	229679	TRADELIN TWINTEC HANDLE FRONT COVER MOULDING	1
56	219105	No8 X 5/8 INCH LONG POZI PAN PLASTITE SCREW	8
57	219254	O RING 3MM DIA X 60MM I/D	2
58	329000	HANDLE BRACKET	1
59	237425	PTO SUPPORT MOULDING	1
60	220964	APPLIANCE OUTPUT SOCKET	1
61	237426	FM REAR COVER MOULDING	1
62	237427	FM PLUG COVER MOULDING	1
63	229050	12MM (STAINLESS STEEL) BALL BEARING	1
64	219045	M5 X 16MM LONG POZI PAN SEMS SCREW	2
65	229074	ADJUSTMENT GEAR	1
66	229009	BLANKING PLUG	1
67	236161	HFM HANDLE CORD SET ASSEMBLY	1